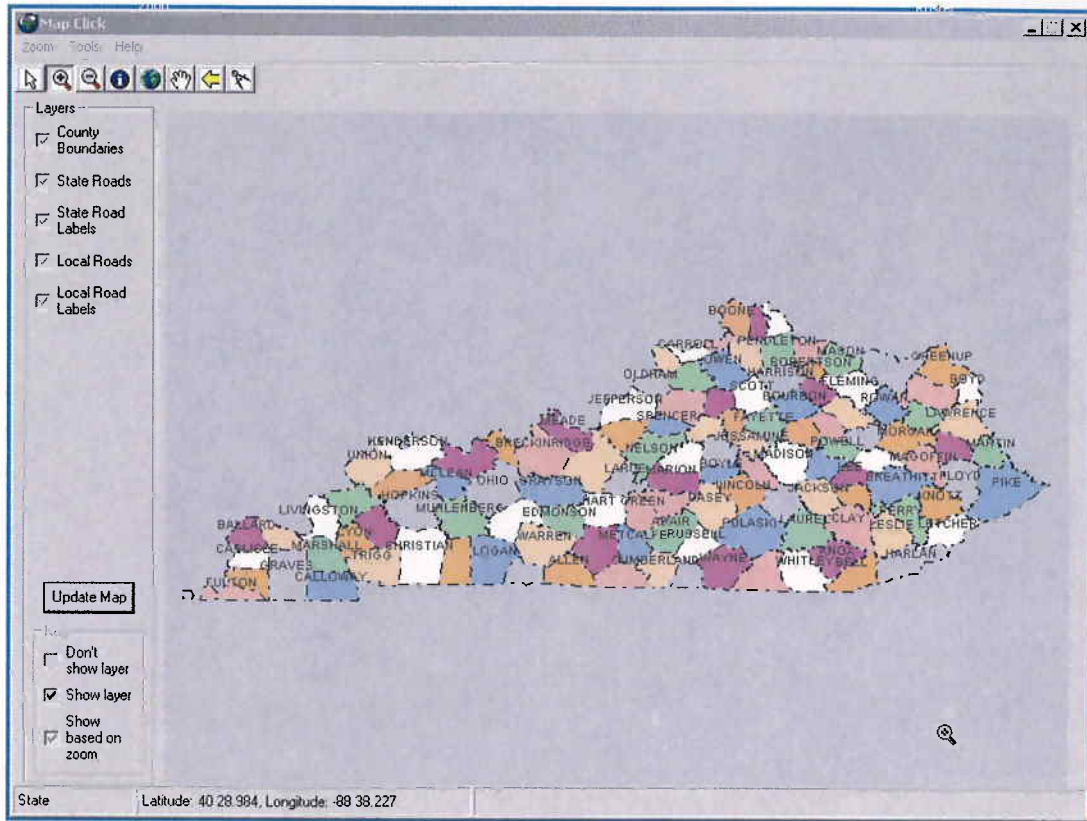


MapClick Crash Location Assistance Tool



Results

State road results:

County:

Route:

Road Name:

Milepoint:

Latitude:

Longitude:

Address Information

Road Name:

Left: Right:

MapClick User Agreement:

MapClick has been developed by Eric Green at the Kentucky Transportation Center. MapClick may be used without cost for the purpose of improving the accuracy of location data. MapClick can be made available to any state and local agency that may benefit from this software. MapClick may not be re-distributed, re-branded or sold.

Contact information for Eric Green:

Telephone: (859) 257-4513 x254

Fax: (859) 257-1815

140C Raymond Building
University of Kentucky
Lexington, KY 40506-0281

egreen@engr.uky.edu

Overview

MapClick offers a way to obtain location information by clicking on an area of a map of Kentucky. The user may zoom, pan and search to a location and click on a point to obtain the location information. The location information is presented in two forms:

CRMP: County Route and Mile Point. The county name, the route prefix, route number, route suffix, and the milepoint to three decimal places.

e.g. Fayette County, US-27, MP = 5.416

GPS Coordinates: Latitude and Longitude coordinates in degrees-decimal minutes.

e.g. 38 2.305 and -84 30.423

The CRMP information is only available for the State-Maintained roadway system (KY, US, Parkways and Interstates), however GPS coordinates will be returned for any location.

The Map Layers

Several data layers will be shown while viewing the map. These layers will help you locate where you are. Below are these layers and a description.

Thick Dark Blue – These lines represent the centerlines of State Routes (KY, US, Parkways and Interstates).

Thin Light Blue – The lines represent the centerlines of Local Roads.

Red Letters – State and Local road labels.

Dashed Black Line – County boundaries.

Bright Blue – Rivers.

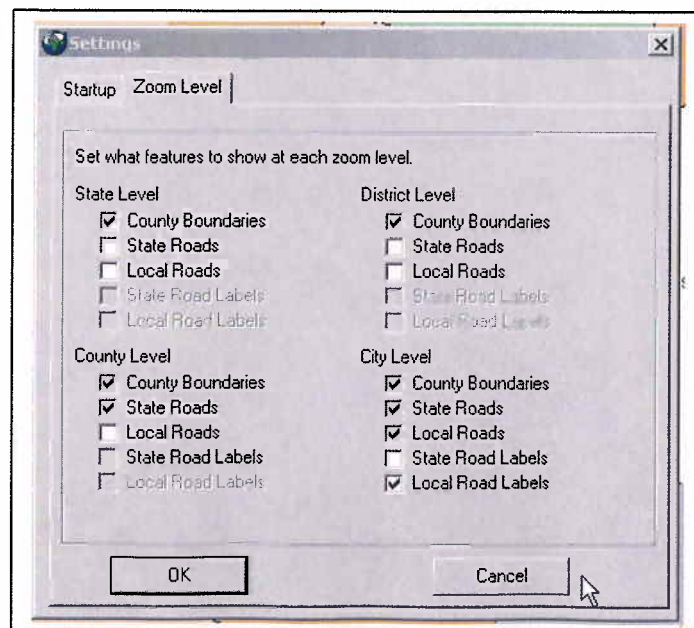
Hatched Black – Railroads (active and abandoned).

The Layer Pane

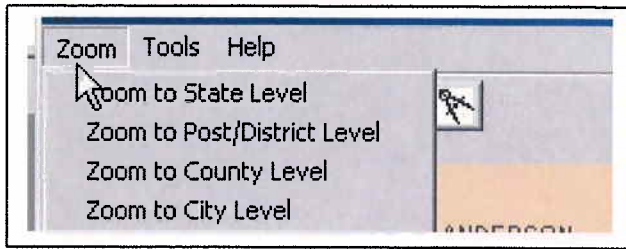
The layer pane is always available to the left of the map. It can be used to turn on and off layers to speed up refresh times or to make items on the map more visible. By default all layer check boxes are grayed-out. This means that they will be shown or hidden based on your zoom extent (see Zoom Extents below). At any point you can turn on or off a layer. You must refresh the map in order for the changes to take effect. You can refresh the map by clicking “Update Map” or by using the Pan or Zoom tools. For example, the map will take a few seconds to update when you zoom into a downtown area with a lot of local streets to label. You can turn off local road labels by unchecking the checkbox and then you can pan around the map with much faster refresh times.

Zoom Extents

Map click is divided into four zoom extents: State, District (several counties), County and City. Each extent is predetermined based on the zoom level and can be seen in the bottom right of the status bar. The purpose of the view extent is to automatically show and hide each data layer. For instance, you wouldn't want to show local roads while viewing the whole state. Not only would it take a while to refresh the map but it would also be indiscernible. You can set which layers are visible in each extent in the settings (Tools>Settings). For example you can have Map Click not label the local roads when viewing city extent. This can drastically improve the refresh speeds.



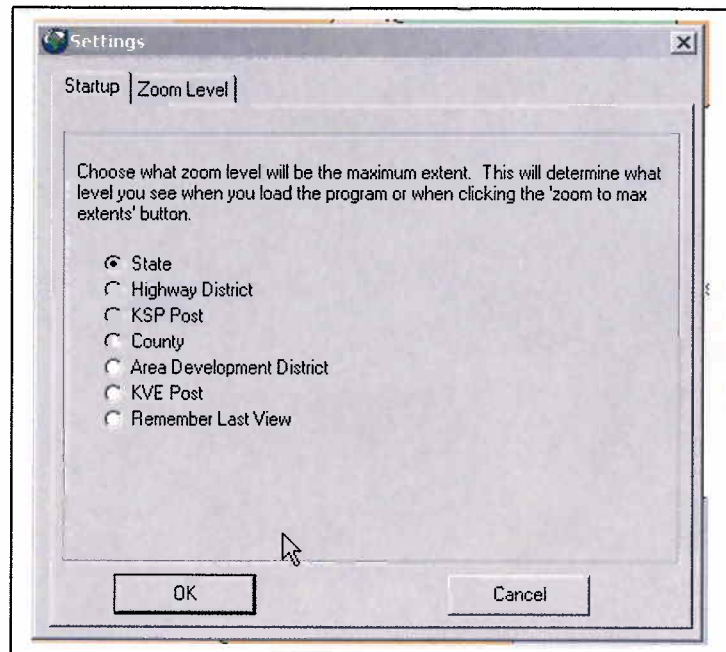
The Zoom menu has quick menu shortcuts to the four zoom extents. This can be useful when you want to zoom back out to the full county.



Startup

Map Click can be set to startup in a particular view of the state. By default the whole state is shown. You can set it (in Tools>Settings) to start in the following:



- Highway District
- KSP Post
- County
- Area Development District
- KVE Post









In addition you can set it to remember the last view before you closed.

Toolbar Items

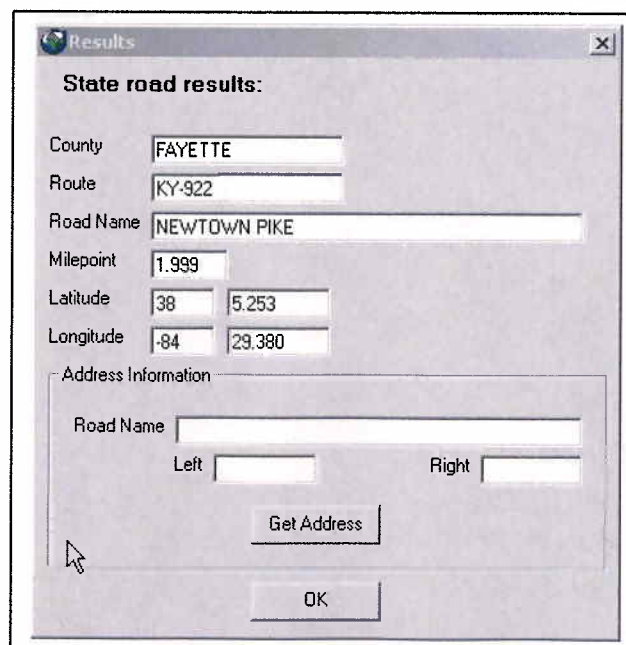
The following map tools are available:

-  Pointer – This is used to select a location (see Location below)
-  Zoom In – This is used to zoom the map in. You can simply click on an area of the map and it will do a fixed zoom in. Alternatively you can draw a box (rubber band tool) and zoom into that area.

-  Zoom Out – This is used to zoom the map out. You can simply click on an area and it will do a fixed zoom out (this should be used for small zoom out increments. For faster results you can use the extents on the Zoom menu.
-  Identify – This tool is used to identify a road. Simply click on a road way and it will give you the information. This is somewhat faster than the selection tool which also returns location information.
-  Zoom to Maximum Extents – this can be pressed to zoom to the startup extent. It can be defined in the settings.
-  Pan – This tool is used to pan across the map. Simply click and hold on a point on the map and drag the map to a new view then let go. It can be used to view an area of the map that is just outside of your view area.
-  Previous Extent – This will return that map to the previous zoom extent (like a browser's back button).
-  Measure Tool – use this to measure a straight line distance between two points. Click one to identify the starting point and a second time to define the ending point. This tool may be slow to respond so you must be patient. Not recommended for slower computers.

Location

With the pointer tool active you can click on a point on the map to obtain the location information. The location tool first looks for the nearest state route. If more than one state route is found a dialog will be presented asking which route you want to locate. You will then be presented with the County, Route, Mile Point, Road Name and GPS coordinates of the location you clicked. Optionally you can obtain the Address of the location by clicking the button (see Address below). Next local road data will be searched if no state route is found nearby. The same form will display the nearest local road information; however no route and mile point information will be displayed. If no local road is found then you will be asked if you simply want the GPS of the clicked area.



The screenshot shows a dialog box titled "Results" with a close button (X) in the top right corner. The main heading is "State road results:". Below this, there are several input fields with their respective values:

- County: FAYETTE
- Route: KY-922
- Road Name: NEWTOWN PIKE
- Milepoint: 1.999
- Latitude: 38 5.253
- Longitude: -84 29.380

Below these fields is a section titled "Address Information" which contains:

- Road Name: (empty field)
- Left: (empty field)
- Right: (empty field)
- Get Address: (button)
- OK: (button)

